

Your Science Home Learning
will be set on Educake



Watch this video which shows
you how to use Educake

<https://vimeo.com/823680680>

How do I log in?

- Your username is the same as last year and the same for all subjects (it will be given to you on a sticker)
- Your password has been reset.
- The first time you log in in September your username and password will be the **SAME**.
- Reset your password to something you will remember and **WRITE IT DOWN**
- If you think you will forget your password, just set it to **Educake**

How often is home learning set?

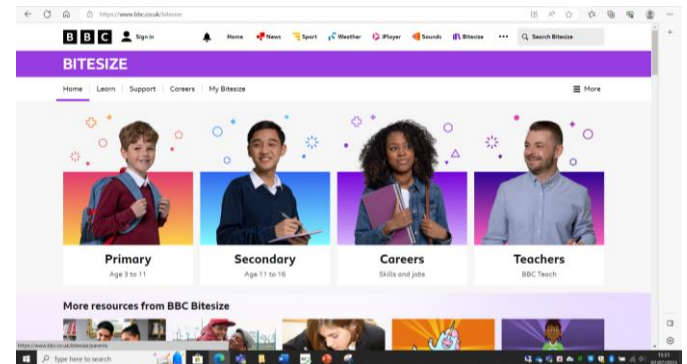
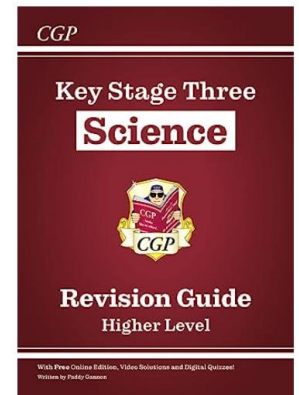
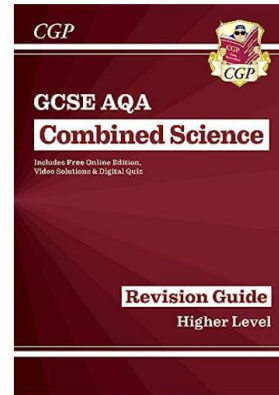
- A home learning quizzes are set every Monday, to be completed by the following Monday
- The quizzes will alternate Biology, Chemistry, Physics
- Your home learning will always be set by a science teacher at Southam College, however it may not be set by your science teacher.

How long are the quizzes?

- Years 7, 8 and 9 – each quiz is 20 questions long
- Years 10 and 11 Foundation – each quiz is 20 questions long
- Years 10 and 11 Higher– each quiz is 25 questions long
- Years 10 and 11 Separate – each quiz is 35 questions long

How do I complete the quizzes?

- They are not a test.
- Use resources around you to help:
 - Revision guides
 - Collins Connect
 - BBC Bitesize



Why is completing Educake home learning good?

- You are covering what you learnt in the lesson a second time at home, so there's more chance you will remember and understand it.
- Repeating questions helps you learn.
- Your teacher can see which areas you struggle with and use this to help you in the lesson

Don't forget...

- You can repeat quizzes to check if you have improved
- When repeating quizzes your highest mark will be submitted
- You can use Educake to help you revise by selecting specific units.

These were all explained in the video

What happens if I forget my password or username?

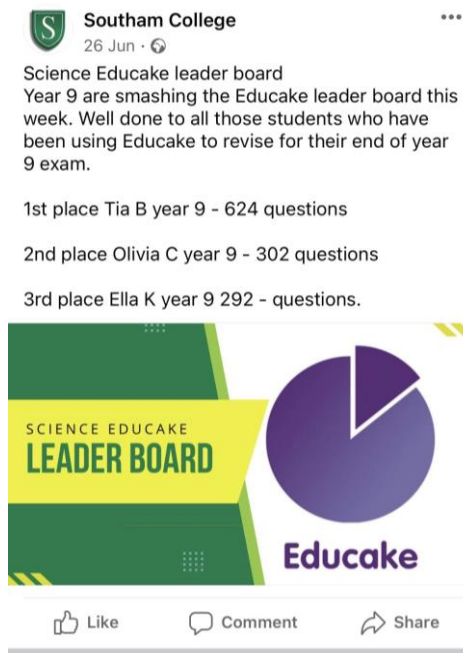
- See a science teacher as soon as you can, any science can reset your password.
- Do not wait until the night before your home learning quiz is due in to check you can log in.
- Not knowing your log in details is not an excuse for not doing your home learning.

What happens if I don't do my home learning?

- Your science teachers will be checking completion and attainment in your quizzes.
- If home learning is not completed then after school home learning detentions will be set in line with the school policy.

Rewards

- Check out the Science Leader Board each week on social media. If you are one of the hard working students who have completed the highest number of questions for the week you get lots of HAPs
- Some students will be recognised as making a special effort for the half term and will receive a post card home
- At the end of each term there will be a prize draw. Students recognised as putting in that extra effort could win an Amazon gift voucher!



Got a question?

- Use the link below to access the Educake User Guide

<https://help.educake.co.uk/en/collections/3316901-using-educake-as-a-student>

- Ask your science teacher